



Snow Storm Quartz

## Luxury boutique development chooses Stone of London's Snow Storm as the surface of choice



Providing the ultimate in modern living, this boutique residential development nestled in Muswell Hill blends cutting edge architectural design with practical hi-tech materials.

Designed and developed by JAMM Living, which is SAS Investments' residential property brand, the Pinnacle N10 development consists of 30 homes which have been developed with a clear vision to maximise space and bring contemporary, luxury living to the mass market.

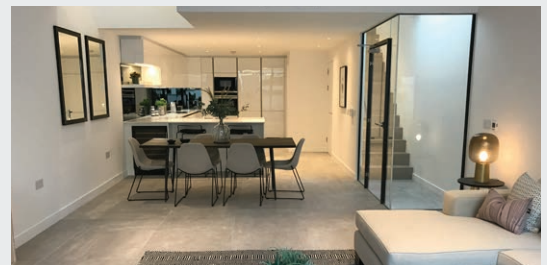
Stone of London were contacted to help design and fabricate the kitchen areas, including the worktops, splash backs and utility rooms. Snow Storm was the preferred surface and was supplied in a 20mm thickness. The white quartz surface provides an aesthetically stunning, clinical appearance which perfectly compliments and contrasts the smoked grey mirror splashbacks.

The Snow Storm also integrates effortlessly with the white high gloss cabinetry throughout the kitchen, which oozes style and sophistication with its minimal appearance and absence of handles.

Integrated within the kitchen cabinetry is a bespoke shelving area, perfect for storing kitchen accessories or displaying decorative accessories. The shelf was custom-built and carefully fabricated to uphold the sleek design of the kitchen.

Snow Storm is an excellent surface for modern kitchens as it offers the natural beauty of marble with all of the practicality of quartz. It perfectly mimics the look and feel of marble yet the quartz offers an extraordinary resilience to scratches and stains, due to the fact it is manufactured from 94% natural materials. Not only that, but the non-porous nature of quartz means it is easy to maintain.

The simple yet sophisticated design of the kitchen means it blends seamlessly with the open plan living area next to it. The Pinnacle N10 development is currently still under development (as of November 2016), due for completion early 2017, and has been nominated for the Architecture of the Year Award 2016.



**Our brief for the kitchen areas throughout the development was clear, we wanted to create a contemporary space that offered luxurious aesthetics combined with a high level of durability and practicality to cope with everyday use.**

**Stone of London provided an exemplary service and offered innovating surfacing solutions for the kitchen and utility areas. The quality of the quartz surfaces matched the high standards of the property, and was backed with highly competent advice from the Stone of London team."**



Robert Kleinman  
SAS Investments

**Stone of London Ltd**

Tel: 01923 856 100  
Email: [info@stoneoflondon.com](mailto:info@stoneoflondon.com)  
Web: [www.stoneoflondon.com](http://www.stoneoflondon.com)

